



# M\*CARBO Phoenix Arms HP22A/ HP25A Trigger Spring Kit & Extra Power Recoil Spring



Download or Print Instructions | Contact: [help@mcargo.com](mailto:help@mcargo.com) | Page 1



You must be 18 yrs of age to purchase. We advise that all parts purchased from our inventory be installed and inspected by a qualified gunsmith. Modifying your weapon may be prohibited in your state. Do not modify your sear or hammer engagement surfaces. Before installing please be sure to check all local state and federal laws. By installing this part you agree to take full responsibility for any and all legal, health and warranty consequences that may be incurred.



Step 1: Clear your Firearm - Check the chamber, bolt face and magazine well.



Step 3: To start we'll remove the Slide and Barrel. Lock the Hammer back and pull back on the slide a bit.



Step 2: Gather Parts & Tools needed for Installation



1. Phoenix HP22A & HP25A Trigger Spring Kit
2. Phoenix HP22 Recoil Spring
3. Hammer
4. 1/16", 3/32", and 1/8" Punches
5. Bench Block
6. Micro-Tip Flathead Screwdriver
7. Regular Flathead Screwdriver
8. Eye Protection

Step 4: Pull forward on the small Front Lever and Push Up on the Barrel.





# M\*CARBO Phoenix Arms HP22A/ HP25A Trigger Spring Kit & Extra Power Recoil Spring



Download or Print Instructions | Contact: [help@mcargo.com](mailto:help@mcargo.com) | Page 2

You must be 18 yrs of age to purchase. We advise that all parts purchased from our inventory be installed and inspected by a qualified gunsmith. Modifying your weapon may be prohibited in your state. Do not modify your sear or hammer engagement surfaces. Before installing please be sure to check all local state and federal laws. By installing this part you agree to take full responsibility for any and all legal, health and warranty consequences that may be incurred.



Step 5: Pull back on the Slide as you remove the Barrel.



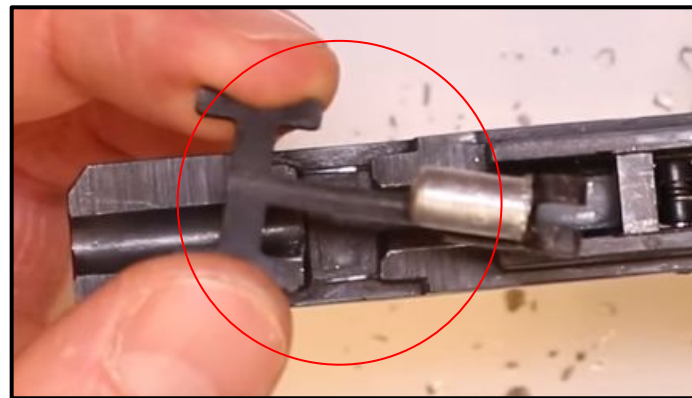
Step 6: Slowly remove the Slide. Be careful of the Recoil Spring as it may jump out.



Step 7: Remove the Recoil Spring.



Step 8: Remove the Release Lever





# M\*CARBO Phoenix Arms HP22A/ HP25A Trigger Spring Kit & Extra Power Recoil Spring



Download or Print Instructions | Contact: [help@mcargo.com](mailto:help@mcargo.com) | Page 3



You must be 18 yrs of age to purchase. We advise that all parts purchased from our inventory be installed and inspected by a qualified gunsmith. Modifying your weapon may be prohibited in your state. Do not modify your sear or hammer engagement surfaces. Before installing please be sure to check all local state and federal laws. By installing this part you agree to take full responsibility for any and all legal, health and warranty consequences that may be incurred.



Step 9: Use your Regular Flathead Screwdriver to remove the Two Screws on the Left Side Grip.



Step 10: Remove the Grip Cover.



Step 11: Slide off your Safety.



Step 12: Use your Micro-Tip to pull up on the leg of the Sear Spring and remove it.





# M\*CARBO Phoenix Arms HP22A/ HP25A Trigger Spring Kit & Extra Power Recoil Spring



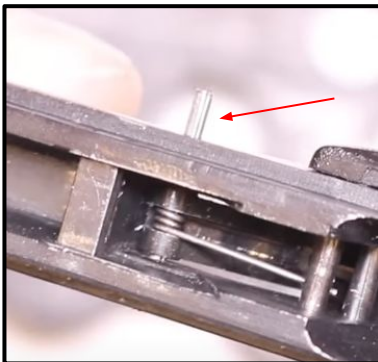
Download or Print Instructions | Contact: [help@mcargo.com](mailto:help@mcargo.com) | Page 4



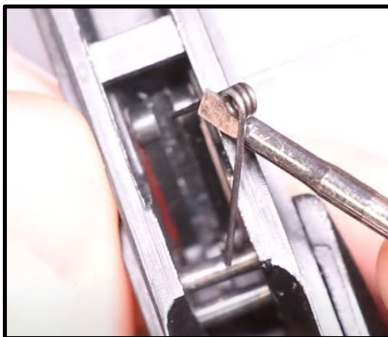
You must be 18 yrs of age to purchase. We advise that all parts purchased from our inventory be installed and inspected by a qualified gunsmith. Modifying your weapon may be prohibited in your state. Do not modify your sear or hammer engagement surfaces. Before installing please be sure to check all local state and federal laws. By installing this part you agree to take full responsibility for any and all legal, health and warranty consequences that may be incurred.



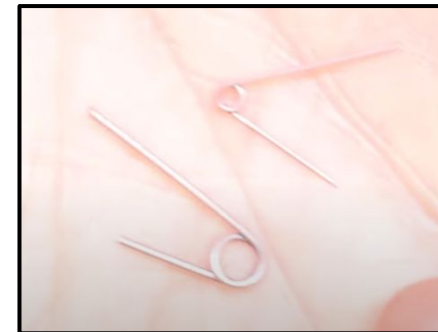
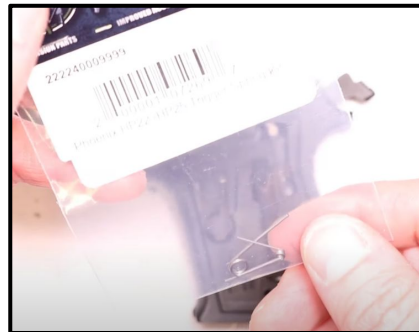
**Step 13:** Set the Frame on your Bench Block. Use your 1/16" Punch and Hammer to tap out the Trigger Hinge Pin Most of the way.



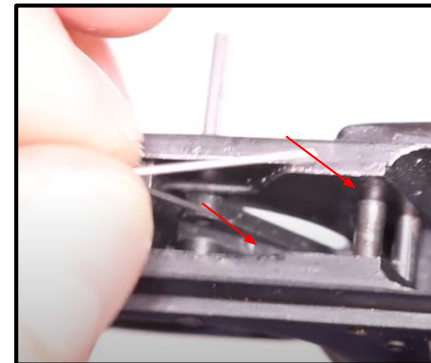
**Step 14:** Use your Micro-Tip to remove the Trigger Return Spring,



**Step 15:** Open up your MCARBO Trigger Spring Kit. Start with the Smaller Trigger Return Spring.



**Step 16:** Insert the New Trigger Return Spring. The short leg should be facing down in the Trigger and the longer leg facing up towards the pins.





# M\*CARBO Phoenix Arms HP22A/ HP25A Trigger Spring Kit & Extra Power Recoil Spring



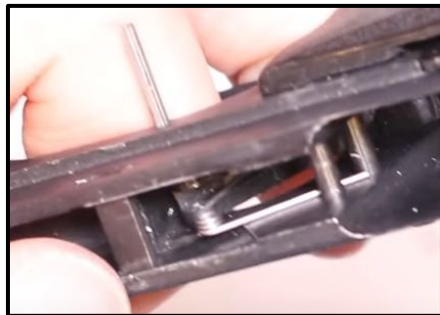
Download or Print Instructions | Contact: [help@mcargo.com](mailto:help@mcargo.com) | Page 5



You must be 18 yrs of age to purchase. We advise that all parts purchased from our inventory be installed and inspected by a qualified gunsmith. Modifying your weapon may be prohibited in your state. Do not modify your sear or hammer engagement surfaces. Before installing please be sure to check all local state and federal laws. By installing this part you agree to take full responsibility for any and all legal, health and warranty consequences that may be incurred.



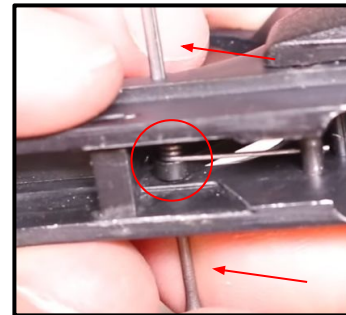
Step 17: Once the Long Leg is captured under the pin, you should be able to use your Micro-Tip to push the Short Leg into place.



Step 18: Use your Regular Flat-Head to line up the coil of the Spring with the Trigger Hinge Pin.



Step 19: Insert your 1/16" Punch through the opposite side of the Hinge Pin and Capture the Spring.



Step 20: Use your Hammer to Push in the Hinge Pin as you slowly back out your Punch.





# M\*CARBO Phoenix Arms HP22A/ HP25A Trigger Spring Kit & Extra Power Recoil Spring



Download or Print Instructions | Contact: [help@mcargo.com](mailto:help@mcargo.com) | Page 6



You must be 18 yrs of age to purchase. We advise that all parts purchased from our inventory be installed and inspected by a qualified gunsmith. Modifying your weapon may be prohibited in your state. Do not modify your sear or hammer engagement surfaces. Before installing please be sure to check all local state and federal laws. By installing this part you agree to take full responsibility for any and all legal, health and warranty consequences that may be incurred.



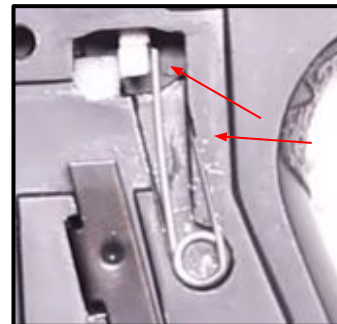
Step 21: Check that your Pin is flush with the frame. If necessary, use your 1/16" Punch and Hammer to level it out.



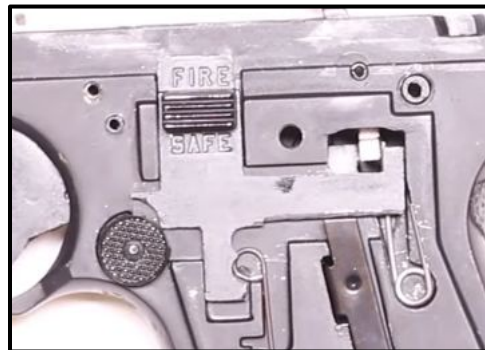
Step 22: Grab your new Sear Spring.



Step 23: Push in the Spring Short Leg First so it locates in the Small Cutout. The Long Leg should drop behind the small portion of the Sear.



Step 24: Drop the Safety back into the Frame. Pull the Safety Spring over and make sure it captures in the small recess at the bottom of the Safety.





# M\*CARBO Phoenix Arms HP22A/ HP25A Trigger Spring Kit & Extra Power Recoil Spring



Download or Print Instructions | Contact: [help@mcargo.com](mailto:help@mcargo.com) | Page 7



You must be 18 years of age to purchase. We advise that all parts purchased from our inventory be installed and inspected by a qualified gunsmith. Modifying your weapon may be prohibited in your state. Do not modify your sear or hammer engagement surfaces. Before installing please be sure to check all local state and federal laws. By installing this part you agree to take full responsibility for any and all legal, health and warranty consequences that may be incurred.



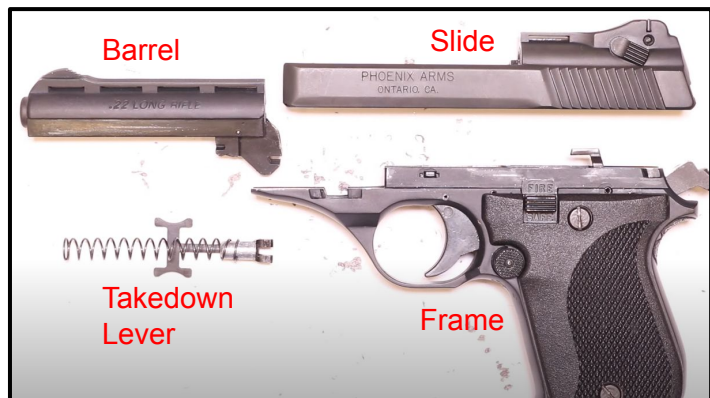
Step 25: Reattach the Grip and screw in the Grip Screws.



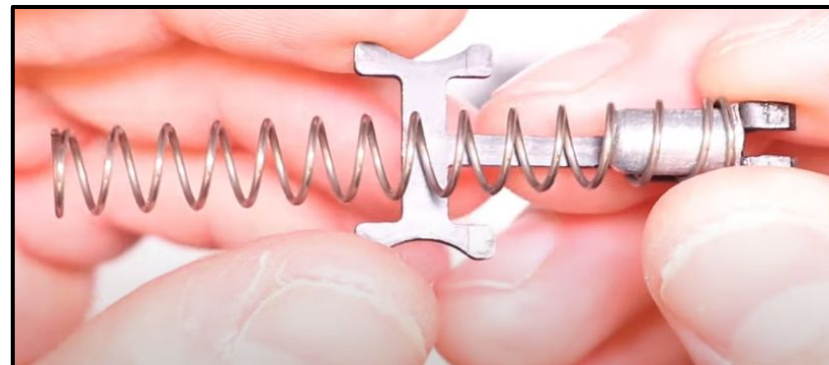
Step 27: Open your new M-CARBO Recoil Spring.



Step 26: Lay out your Remaining Parts.



Step 28: Replace the Factory Spring on the Takedown Lever with the New Recoil Spring.





# M\*CARBO Phoenix Arms HP22A/ HP25A Trigger Spring Kit & Extra Power Recoil Spring



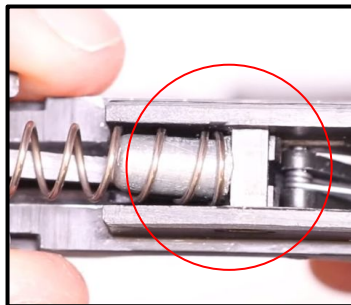
Download or Print Instructions | Contact: [help@mcargo.com](mailto:help@mcargo.com) | Page 8



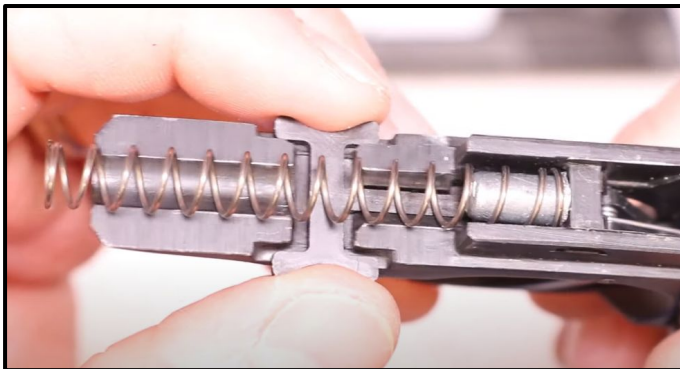
You must be 18 yrs of age to purchase. We advise that all parts purchased from our inventory be installed and inspected by a qualified gunsmith. Modifying your weapon may be prohibited in your state. Do not modify your sear or hammer engagement surfaces. Before installing please be sure to check all local state and federal laws. By installing this part you agree to take full responsibility for any and all legal, health and warranty consequences that may be incurred.



Step 29: Insert the Takedown Lever back into the Frame. The two tabs on the Lever should locate under the support on the Frame.



Step 30: Make sure the Lever Locates in the Channel on the Frame.



Step 31: Place the Slide over the Recoil Spring. Pull back and get the Slide to Locate on the Two Rails near the Hammer.



Step 32: As you Slide the Slide back, keep your finger over the Spring until you can Lock the Slide Back.







# M\*CARBO Phoenix Arms HP22A/ HP25A Trigger Spring Kit & Extra Power Recoil Spring



Download or Print Instructions | Contact: [help@mcargo.com](mailto:help@mcargo.com) | Page 9



You must be 18 yrs of age to purchase. We advise that all parts purchased from our inventory be installed and inspected by a qualified gunsmith. Modifying your weapon may be prohibited in your state. Do not modify your sear or hammer engagement surfaces. Before installing please be sure to check all local state and federal laws. By installing this part you agree to take full responsibility for any and all legal, health and warranty consequences that may be incurred.



Step 33: Grab your Barrel. The Notch on the Barrel should Locate right onto the Pin below.



Step 34: Snap the Barrel into Place.



Step 35: Place your Firearm on Safety and confirm it works properly.



Step 36: Turn the Safety Off. Pull the Trigger, Release and Listen for the Reset to Confirm everything works.





# M\*CARBO Phoenix Arms HP22A/ HP25A Trigger Spring Kit & Extra Power Recoil Spring

Download or Print Instructions | Contact: [help@mcarbo.com](mailto:help@mcarbo.com) | Page 10

You must be 18 yrs of age to purchase. We advise that all parts purchased from our inventory be installed and inspected by a qualified gunsmith. Modifying your weapon may be prohibited in your state. Do not modify your sear or hammer engagement surfaces. Before installing please be sure to check all local state and federal laws. By installing this part you agree to take full responsibility for any and all legal, health and warranty consequences that may be incurred.



You're All Set! Happy Shooting!

